

# ***Better Community Engagement:***

**Development of a learning programme  
to support and improve practice  
in engaging with communities**

---

## **Argyll and Bute Pilot**

January 2011

# Aims of BCE Programme nationally

---

- Establish one or more working models of effective learning for community engagement across Scotland
- Evidence how structured learning could impact or improve community engagement practice
- Provide an evidence base for future development of learning for community engagement

# Local Demonstration Projects

---

- **Argyll and Bute**
- **Angus**
- **Comhairle Nan Eilean Siar (Western Isles)**
- **East Renfrewshire**
- **Edinburgh Partnership**
- **Faith in Community (Scotland)**
- **Falkirk**
- **Fife Partnership**
- **Moray**
- **West Lothian**

# Advisory Group - Membership

---

- Association of Chief Police Officers Scotland (**ACPOS**)
- Confederation Of Scottish Local Authorities (**COSLA**)
- Community Development Alliance Scotland (**CDAS**)
- Community Learning and Development Managers Scotland (**CLDMS**)
- Edinburgh Partnership (for Local Demonstration Projects)
- Greenspace Scotland
- Her Majesty's Inspectorate of Education (**HMIE**)
- Positive Action in Housing (**PAiH**)
- Research (Universities Scotland)
- Scottish Council for Voluntary Organisations (**SCVO**)
- Scottish Federation of Housing Associations (**SFHA**)
- South Ayrshire Council (for Community Planning Partnerships (**CPPs**))
- The Poverty Alliance

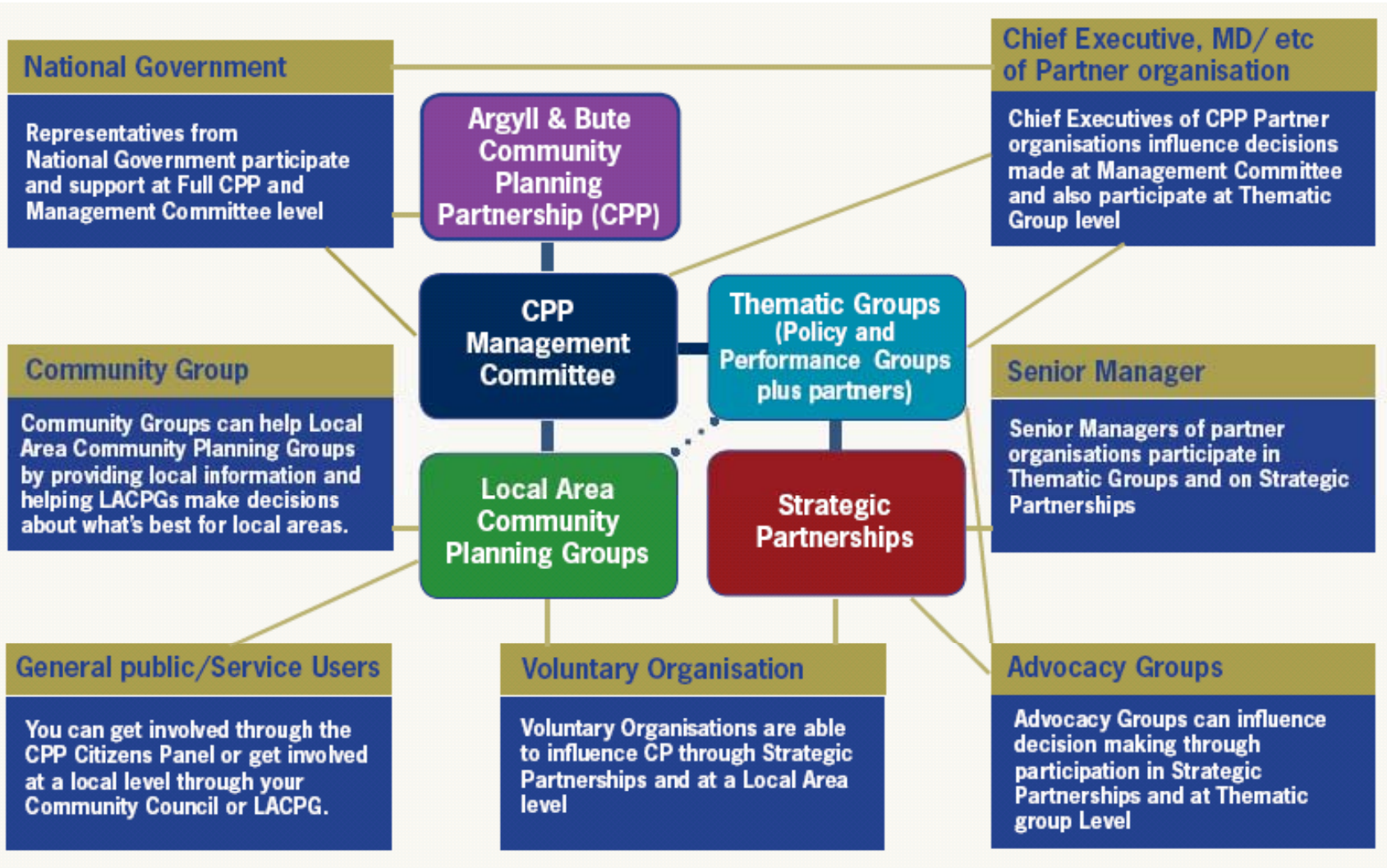
# National context

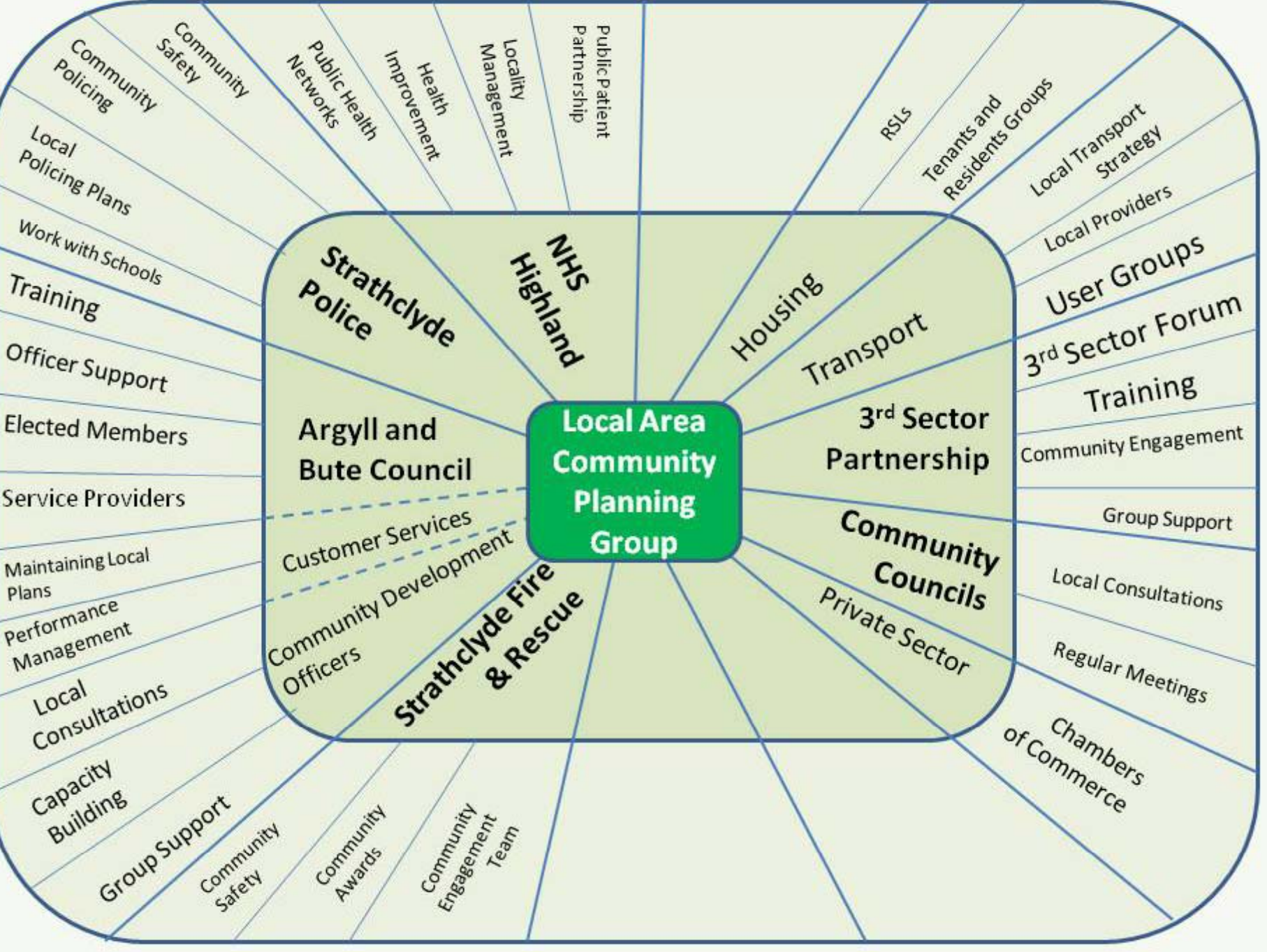
---

- National Government priorities and Single Outcome agreements
- Community Empowerment
- Better Community Engagement – A Framework for Learning was developed by the Scottish Community Development Centre (SCDC) on behalf of Communities Scotland and was published in early 2007



# Argyll and Bute CPP Structure and Stakeholders





# Argyll and Bute Better Community Engagement Pilot – Initial Aims

---

- Develop training materials for effective and appropriate methods of consultation for Community Planning Partners particularly in relation to the LACPG structures
- Develop and provide training to help communities participate at a number of levels
- Identify and develop training on innovative and effective ways of providing feedback to communities and evidence that community voices have been heard and action taken



# Argyll and Bute Pilot – Changes since the project started

---

- Community Development Officers in post
- Community Engagement Strategy and Action Plan
- Community Engagement Sub group agreed as part of CPP structure
- Action Plan for each LACPG developed and amended as a result of Forward Together events



# Argyll and Bute Pilot - progress so far ...

---

- Links with LWTT established
- Partners regularly updated
- Set up steering group
- Identified resources and examples of good practice to include in the resource pack
- Communicated with a range of partners
- Case studies being considered from a range of partners
- Informing partners through presentations

# Argyll and Bute Pilot - Next steps

---

- Training for LACPG partners.
- Feedback from partners on the effectiveness of the resource pack.
- Fine tune the resource pack.
- Report back to LACPG meetings.
- Dissemination of the pack.
- National BCE conference.

# Community empowerment

---

For the newsletter, more information and updates on community empowerment, visit:

[www.scotland.gov.uk/communityempowerment](http://www.scotland.gov.uk/communityempowerment)

Further information please contact your local  
Community Development Officer